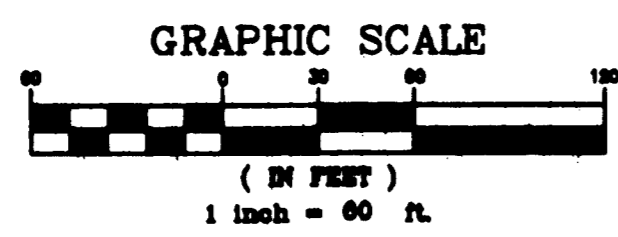


SCALE  
1" = 60'  
JOB NUMBER  
1206-07-PLT



# PLAT OF KANNER CROSSING

Plat Book 16, Page 27

BEING A REPLAT OF TRACT 3 & A PORTION OF TRACTS 6 AND 7, BLOCK 45, ST. LUCIE INLET FARMS, RECORDED IN PLAT BOOK 1, PAGE 98, PUBLIC RECORDS OF PALM BEACH (NOW MARTIN) COUNTY, FLORIDA, LOCATED AT THE INTERSECTION OF STATE ROAD 76 (A/K/A S. KANNER HIGHWAY) AND S.E. SALERNO ROAD, IN THE HANSON GRANT, LOCATED IN MARTIN COUNTY, FLORIDA.

NOTICE: THIS PLAT, AS RECORDED IN ITS ORIGINAL FORM IN THE PUBLIC RECORDS, IS THE OFFICIAL DEPICTION OF THE SUBDIVIDED LANDS DESCRIBED HEREON AND WILL IN NO CIRCUMSTANCES BE SUPPLANTED IN AUTHORITY BY ANY OTHER FORM OF THE PLAT, WHETHER GRAPHIC OR DIGITAL. THERE MAY BE ADDITIONAL RESTRICTIONS THAT ARE NOT RECORDED ON THIS PLAT THAT MAY BE FOUND IN THE PUBLIC RECORDS OF THIS COUNTY.

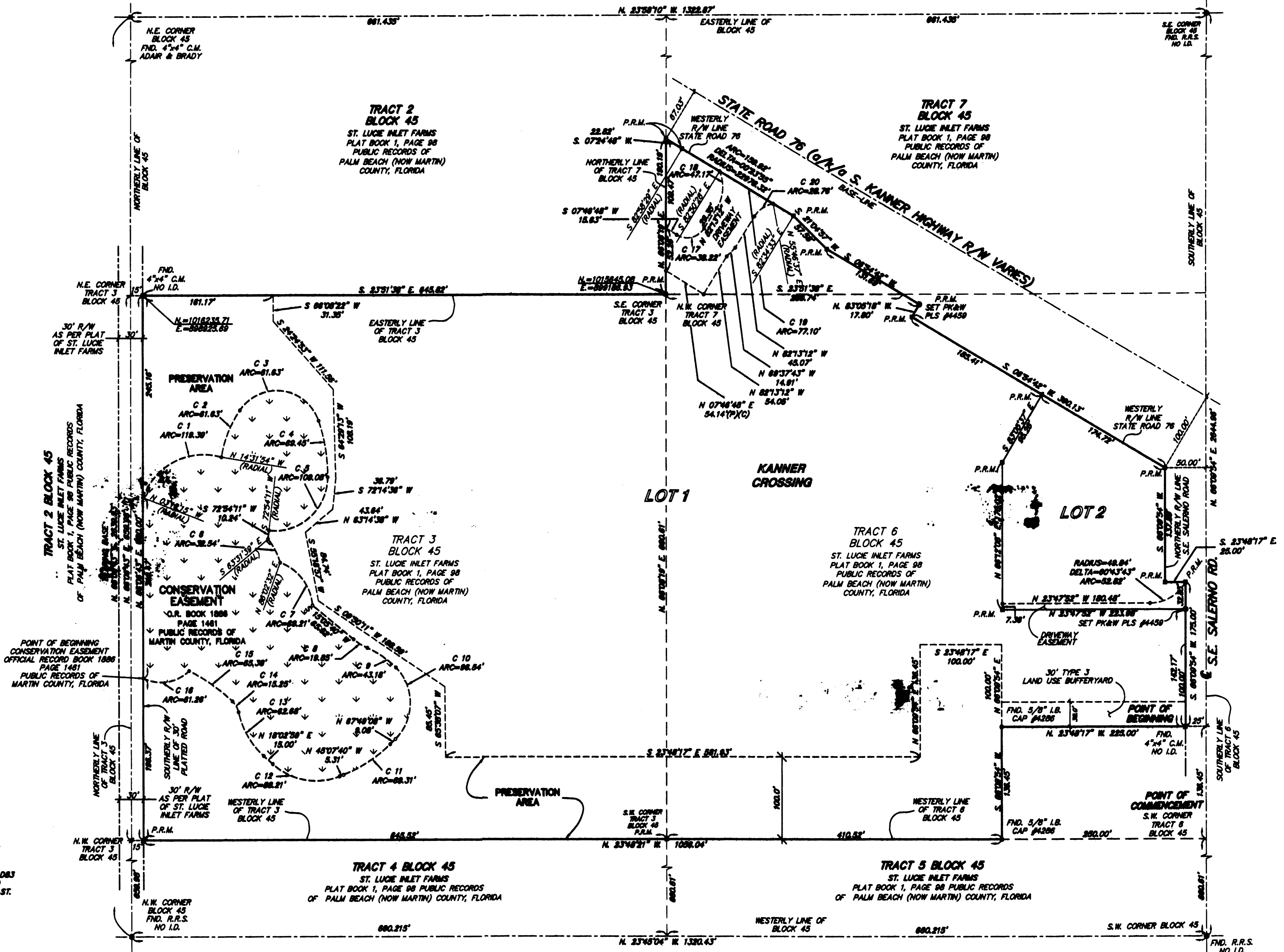
CURVE	DELTA	RADIUS	ARC
C 1	89°30'37"	80.00'	118.30'
C 2	82°17'18"	140.00'	81.67'
C 3	126°22'38"	95.00'	181.11'
C 4	18°53'47"	200.00'	68.48'
C 5	89°22'08"	65.00'	108.08'
C 6	24°28'28"	77.24'	32.54'
C 7	89°28'37"	65.00'	95.21'
C 8	15°28'29"	73.60'	18.85'
C 9	21°30'46"	118.00'	43.18'
C 10	81°02'48"	80.75'	86.54'
C 11	22°41'28"	178.00'	68.31'
C 12	63°10'38"	80.00'	86.21'
C 13	38°34'28"	100.00'	62.68'
C 14	34°37'28"	88.00'	18.85'
C 15	18°17'18"	230.00'	65.38'
C 16	70°11'44"	80.00'	81.89'
C 17	80°00'00"	24.33'	38.82'
C 18	54°47'28"	46.33'	47.17'
C 19	00°11'38"	289.28'	77.10'
C 20	47°38'28"	34.33'	38.78'

- SYMBOLS**
- - SET 4"x4" CONCRETE PERMANENT REFERENCE MONUMENT DISC #4450
  - - SET P.K. NAIL & WASHER PLS #4450
  - - FOUND CONCRETE MONUMENT
  - - FOUND 5/8" IRON BAR
  - - CENTER LINE

- LEGEND:**
- A/K/A - ALSO KNOWN AS
  - C - CURVE (SEE CONSERVATION EASEMENT CURVE TABLE)
  - C.M. - CONCRETE MONUMENT
  - FND. - FOUND
  - I.B. - IRON BAR
  - I.D. - IDENTIFICATION
  - L.B. - LICENSED BUSINESS
  - N&W - NAIL & WASHER
  - O.R. - OFFICIAL RECORD
  - R.R.S. - RAILROAD SPIKE
  - R/W - RIGHT-OF-WAY
  - P.C.P. - PERMANENT CONTROL POINT
  - PK&W - P.K. NAIL & WASHER
  - PLS - PROFESSIONAL LAND SURVEYOR
  - P.R.M. - PERMANENT REFERENCE MONUMENT SET 4"x4" CONCRETE MONUMENT WITH DISC (PLS #4450)

**SURVEYOR'S NOTES**

1. SURVEY OF DESCRIPTION AS FURNISHED BY CLIENT, UNLESS OTHERWISE NOTED.
2. THE BEARINGS SHOWN HEREON ARE BASED ON NAD83 FLORIDA EAST ZONE STATE PLANE COORDINATES AND ARE REFERENCED TO THE NORTH LINE OF BLOCK 45 ST. LUCIE INLET FARMS PLAT BOOK 1, PAGE 98 PUBLIC RECORDS OF PALM BEACH (NOW MARTIN) COUNTY, FLORIDA WITH A BEARING OF N. 85°08'43" E. ALONG SAID LINE. THEREFORE ALL BEARINGS CONTAINED HEREON ARE RELATIVE THERETO.



**ACCURIGHT LAND SURVEYING, INC.**  
1301 DECKER AVENUE UNIT 418 - STUART, FLORIDA, 34984  
OFFICE PHONE NO. (772) 288-7884 - FAX NO. (772) 220-7883